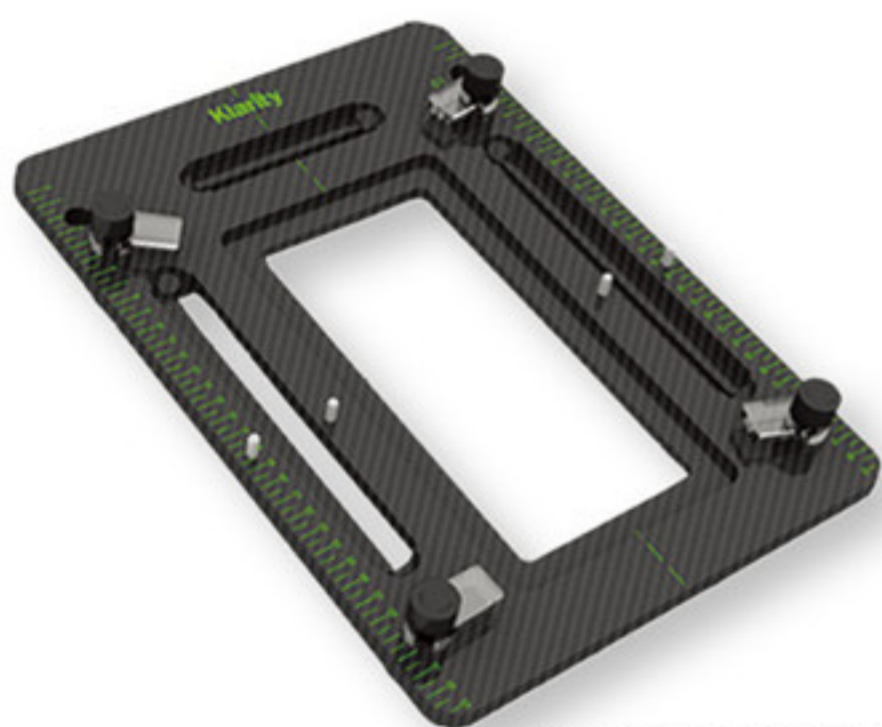


Klarity[®] MultiFix™ Baseplates

Easy and flexible solutions for
head and head & shoulder placement



**Head Only MultiFix™
R605-HCF**

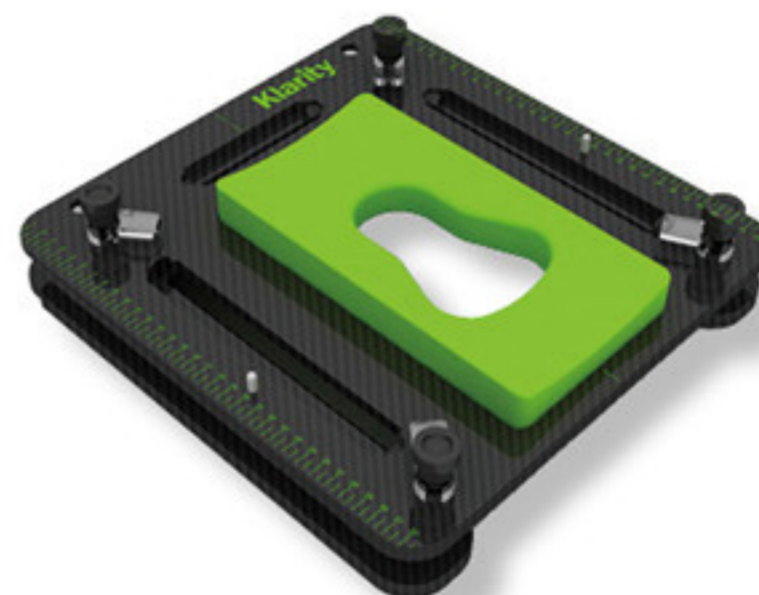
35.5cm (Length) x 25.5cm (Width)



**Head & Shoulder MultiFix™
R605-SCF**

43.5cm (Length) x
58cm (Width-Shoulders) x
25.5cm (Width-Head)

Klarity MultiFix™ Baseplates are lightweight and simple positioning solutions for head and head & shoulder placement. Made of strong and durable Klarity-K™ Carbon Fiber, the MultiFixes™ baseplates are fully indexable, and compatible with both U-frame and O-type head masks. The Head Only MultiFix™ and the Head & Shoulder MultiFix™ can be used with standard Silverman headrests, and they are both compatible with the R605-HPCF Prone Head MultiFix™, and the R602-DCF Tilting Head MultiFix™.



**Lateral Head Only MultiFix™
R607-ACF**

33cm (Length) x 32cm (Width) x 7.9cm (Height)

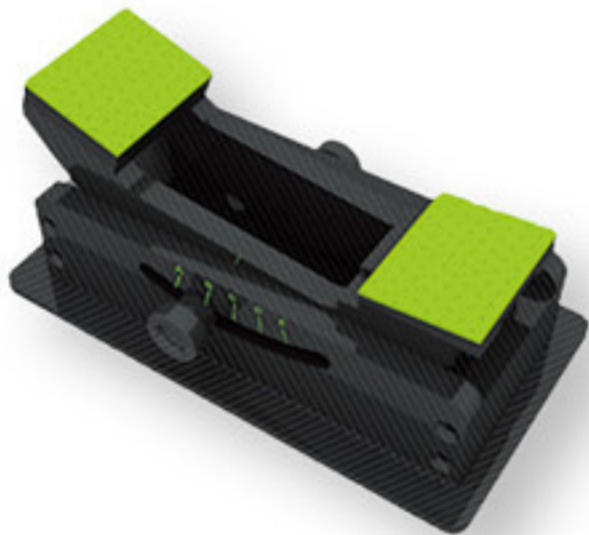
OPTIONAL COMPONENTS:



Tilting Head MultiFix™ **R602-DCF** Carbon Fiber

The Klarity Tilting Head MultiFix™ is an adaptable solution for positioning patients where a customized tilt is necessary. The Tilting Head MultiFix™ can be used for prone or supine positioning. It works with standard Silverman headrests as well as the Klarity Prone Head Support. It is compatible with both U-frame and O-Type head masks. The baseplate is compatible with the R605-SCF Head & Shoulder MultiFix™.

35cm (Length) x 25.4cm (Width)
Max. Height 27cm at 45°
Tilting Angles: 5/10/15/20/25/30/35/40/45°



Prone Head MultiFix™ **R605-HPCF**

The Klarity Prone Head MultiFix™ is a lightweight, easily adjustable option for prone head placement. Made of strong and durable Klarity-K™ Carbon Fiber, the Prone Head MultiFix™ has a cleanable cushion for the forehead and chin. The baseplate is compatible with the R605-SCF Head & Shoulder MultiFix™, which can be used with U-frame and O-type Head Masks.

35.8cm (Length) x 25.7cm (Width)

COMPATIBLE WITH:



U-frame Masks



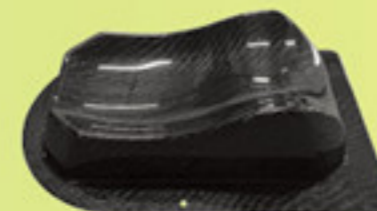
O-type Masks



Klarity AccuCushions®



Indexing Bars



Head Supports
R507 Series